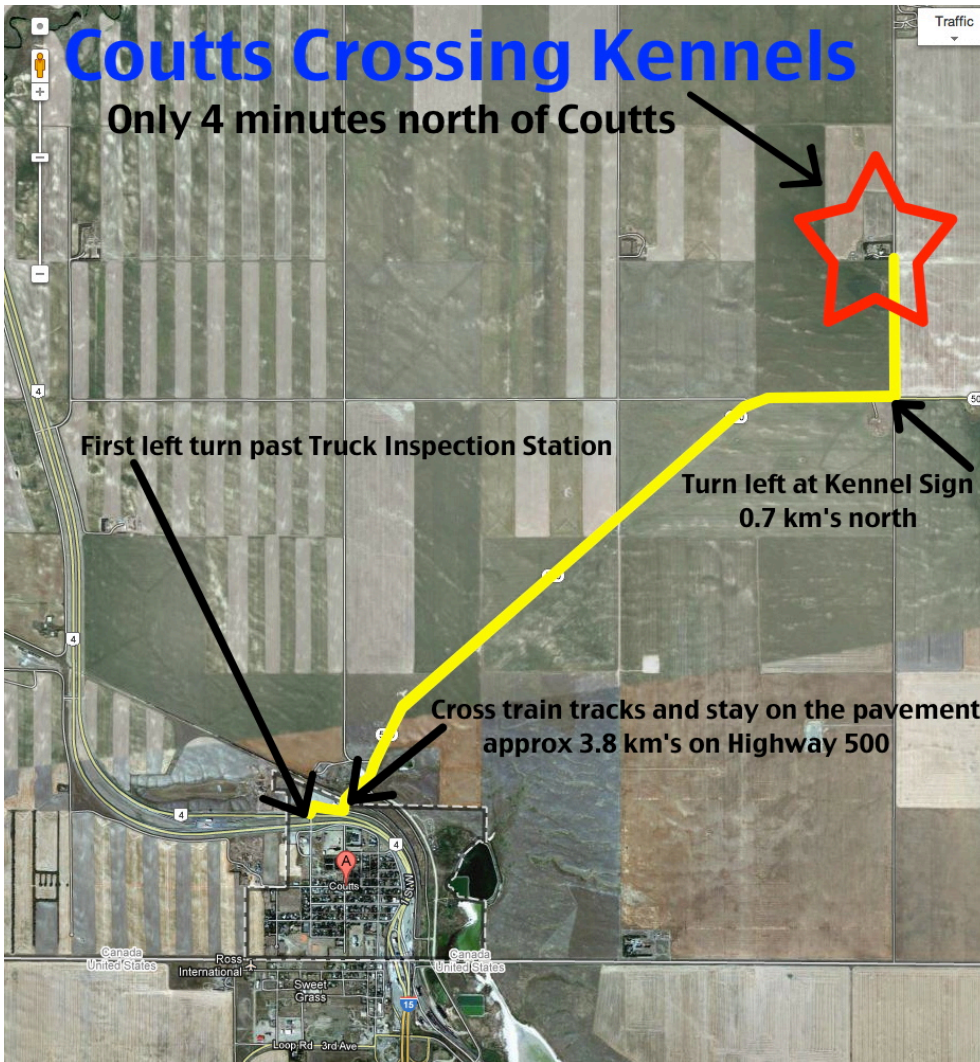


# How To Find Coutts Crossing Kennels



## Directions to Coutts Crossing Kennels

- 1) Highway 4 south to Coutts Alberta.
- 2) Where Highway 4 bends and turns east entering the town of Coutts you will see a Truck Inspection facility on your left.
- 3) Immediately after the Truck Inspection facility, take the first turn to your left across the divided highway and then follow the short twisty gravel road across the train tracks.
- 4) Stay on the pavement (Hwy 500) and proceed approximately 3.8 km's where you will see a sign for the kennel.
- 5) Turn left on the gravel road and proceed to the first set of buildings on your left. You are there.

## Hours of Operation

Monday-----08:00 AM - 7:00 PM  
Tuesday-----08:00 AM - 7:00 PM  
Wednesday -Closed-  
Thursday-----08:00 AM - 7:00 PM  
Friday-----08:00 AM - 7:00 PM  
Saturday-----08:00 AM - 12 Noon  
Sunday-----1:00 PM - 9:00 PM

**If you become lost or you are running late please call us to let us know.**

**(403) 344-2553**